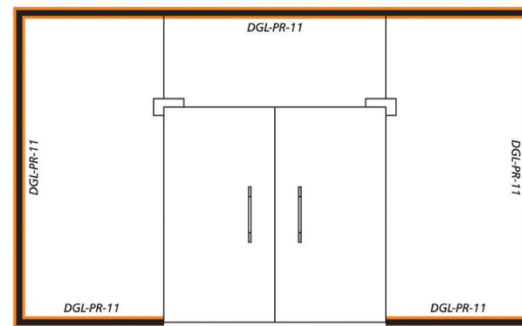
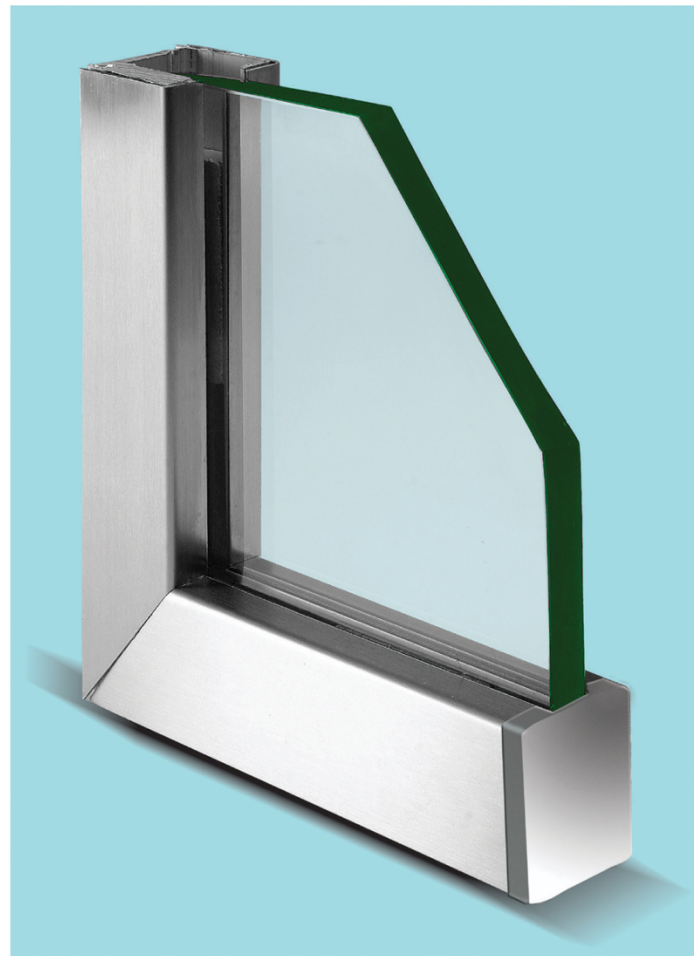
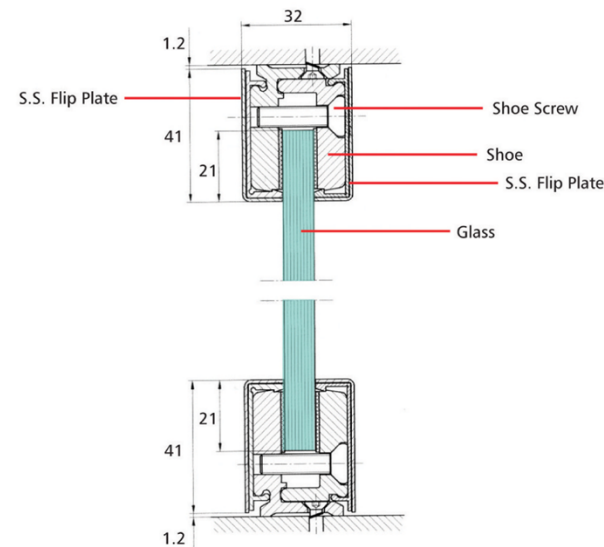


## FITTING APPLICATIONS FOR TEMPERED GLASS ASSEMBLIES



**DGL-PR-11**  
GLASS WEDGE SYSTEM



**UNIQUE DESIGN:**  
SIMPLER AND FASTER INSTALLATION.

**DRY GLAZING:**  
EASY DE MOUNTING, NO GLUE OR SILICON ENABLING GLASS REPLACEMENT TO BE EASIER.

**ECONOMICAL:**  
COST EFFECTIVE AND ALSO SAVES LABOUR COST AND FAST COMPLETION OF PROJECTS.

**AESTHETIC:**  
STAINLESS STEEL CLADDED ALUMINUM PROFILE ALSO ENABLES LOW MAINTENANCE COSTS AND AESTHETIC VALUE OVER A PERIOD OF TIME.

**Features:**

Available with shoe moulding style and pre-drilled hole configuration.

GLASS WEDGE SYSTEM features the dry mount system which provides the installer with a cleaner, simpler method of setting tempered glass panels in structural shoe moulding. Shoe moulding may be surface mounted, fascia mounted or embedded in concrete.

**SAFETY & SECURITY:**

DEEP IN PROFILE AND UNIFORM GRIP ON ALL EDGES OF GLASS ADDS STRENGTH TO GLAZINGS.

DISTRIBUTED BY



**KENWA CO., LTD.**

TOWER WEST 12FL, UMEDA SKY BUILDING, 1-1-30,  
OYODO-NAKA, KITA-KU, OSAKA 531-0076 JAPAN

Phone: 81-(0)6-6454-9721

Facsimile: 81-(0)6-6454-9726

E-Mail: [info@kenwa.co.jp](mailto:info@kenwa.co.jp) <http://www.kenwa.co.jp>

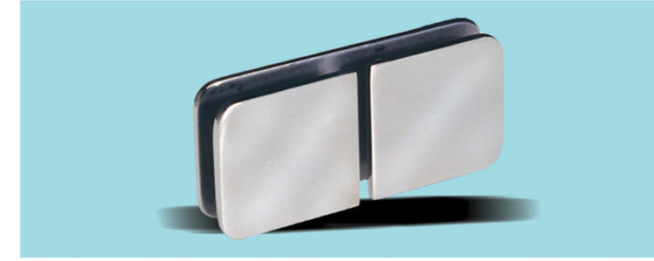
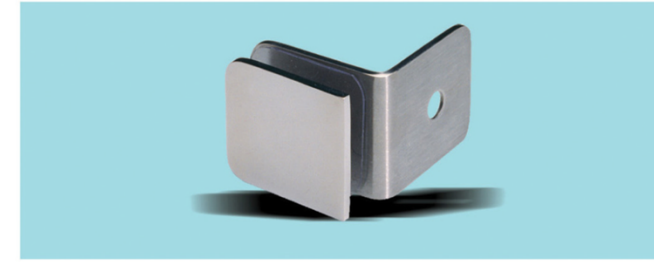
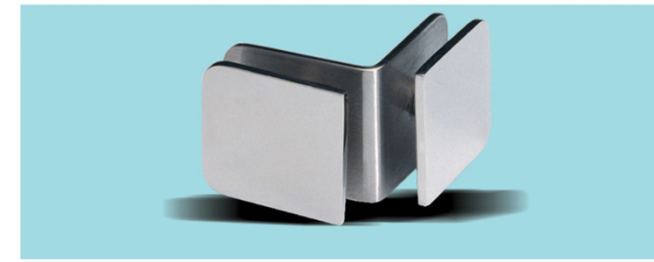
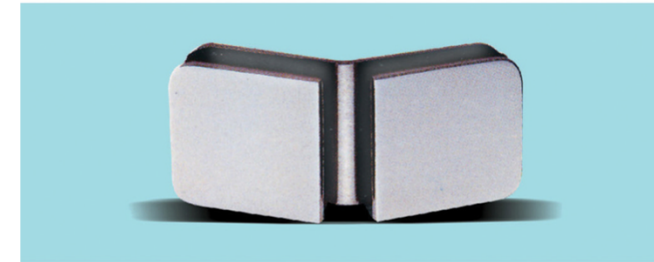
<http://www.micomautodoor.com>

E.&O.E.

All sizes, photo's and drawings are subject to change without prior notice.  
Copyright © 2010 KENWA CO., LTD. OSAKA JAPAN All Rights Reserved.

# NN<sup>®</sup> GLASS CONNECTORS

## GLASS CONNECTORS



**DGC-1**

Shower screen fixing brackets for floor mounted.

**DGC-2**

Shower screen fixing brackets for 135° glass to glass application.

**DGC-3**

Shower screen fixing brackets for 90° glass to glass application.

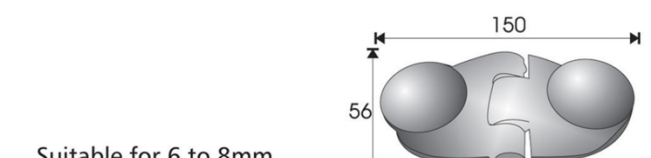
**DGC-4**

Shower screen fixing brackets for 90° wall to glass application.

**DGC-5**

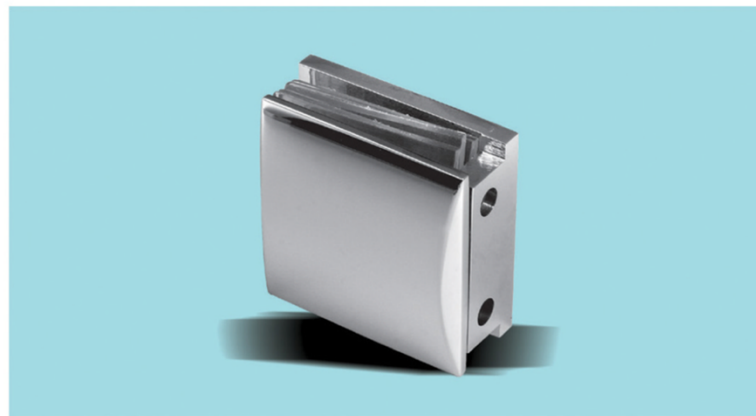
Shower screen fixing brackets for 180° glass to glass application.

**DGC-6**

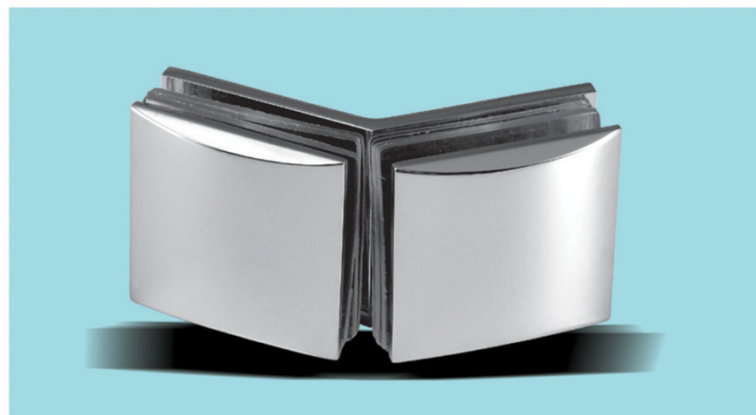
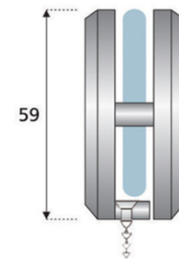


Suitable for 6 to 8mm thick glass width up to 800mm  
Weight up to 15 kgs.

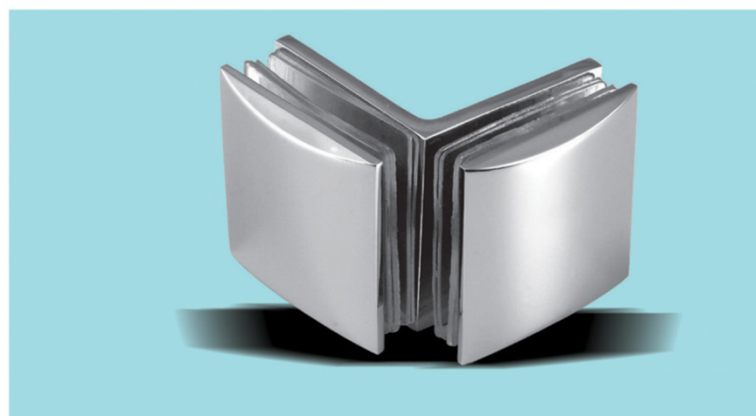
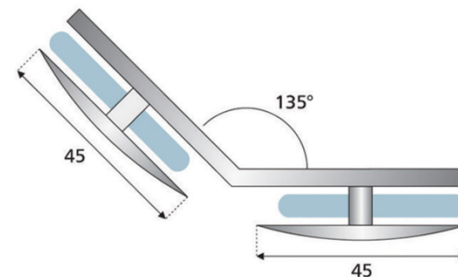
## GLASS CONNECTOR

**DGC-11**

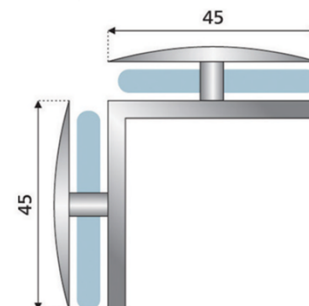
Shower screen fixing brackets for floor mounted.

**DGC-22**

Shower screen fixing brackets for 135° glass to glass application.

**DGC-33**

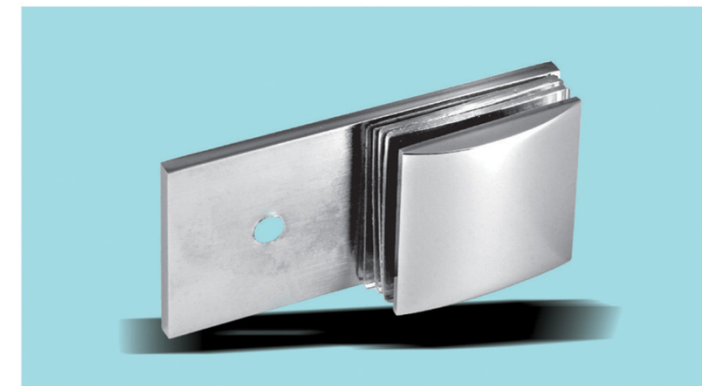
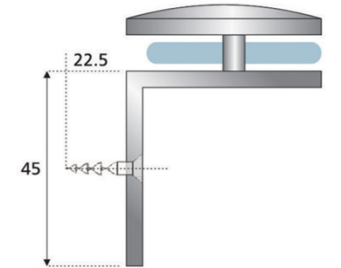
Shower screen fixing brackets for 90° glass to glass application.



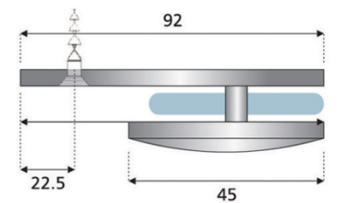
## GLASS CONNECTOR

**DGC-44**

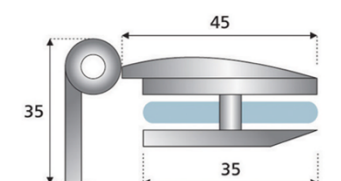
Shower screen fixing brackets for 90° wall to glass application.

**DGC-11A**

Shower screen fixing brackets for floor mounted.

**DGC-66**

Wall to glass hinge without spring action.

**DGC-77**

Glass to glass hinge without spring action.  
Suitable for 6 to 8mm thick glass width up to 800mm  
Weight up to 15 kgs.

