

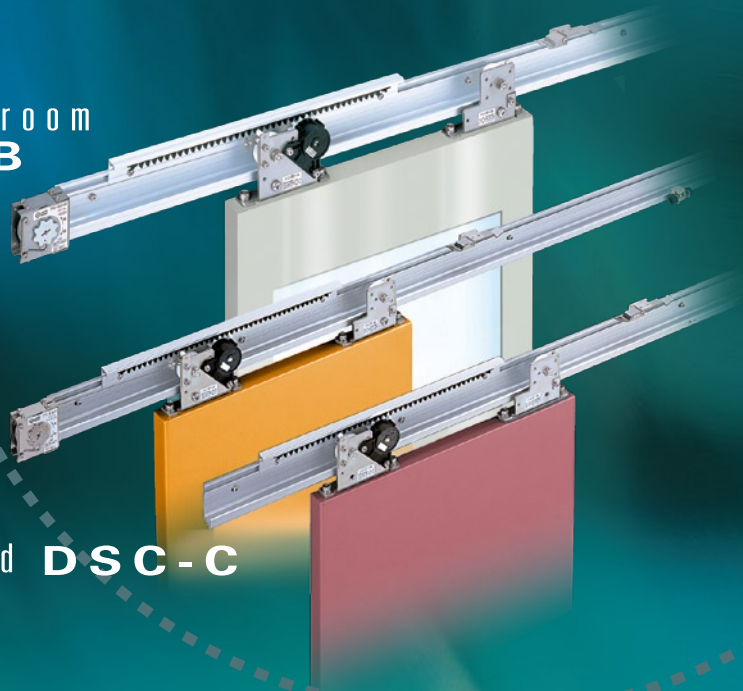
New-generation sliding door closers developed with user-friendly technologies.

NITTO KOHKI Sliding Closer

Horizontal For bathroom
NSC-CB

Horizontal **NSC-C**

Inclined **DSC-C**



We propose a new style of door opening/closing.



For wooden fittings, horizontal,
with door weights of 10-30kg

NSC-CW23 series

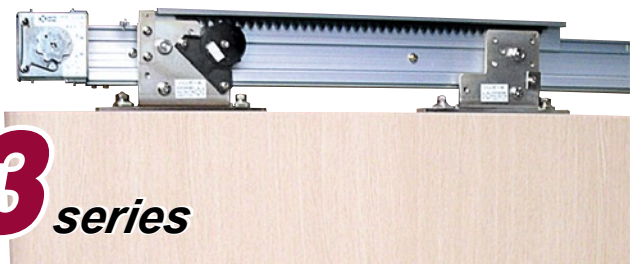
Reliable, Cost Effective, Sliding Doors Closers – Simple to Use & Install

Features

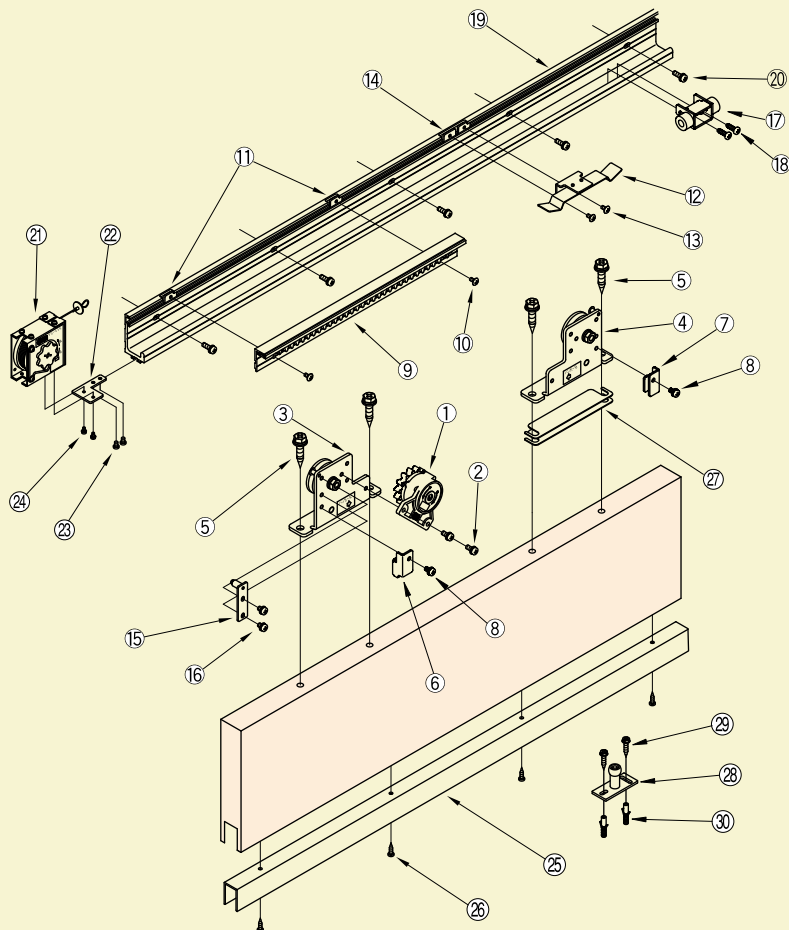
- A standardized set of parts required for horizontal wooden fitting types.
(The product comes standard with a guide rail, guide roller, stop device, and other equipment.)
- Coach screws allow the hanger to be attached directly to the door.
- An endless fluid friction resistance system ensures a long life.
- The product can be converted to the right- and left-handed opening types by simple operation.
- It is easy to install with a screwdriver.

Specifications

Model	NSC-CW23-22	NSC-CW23-31
Applicable doors	Weight [kg]	10-30
	Width [mm]	700-1200
		1200-1600
Max. stroke [mm]	1500	
Closing drive system	Spiral spring type	
Controlling system	Fluid friction resistance type	
Controlling time	7-11 seconds (with a door-opening distance of 900mm)	
Initial opening force [N]	3.5-4.6	
Durability	more than 1 million open/close operations	
Pull spring	PS-02	
Rail length [m]	2.2	3.1



Part details



No.	Part	Q'ty	Remark
①	Control device	1	For control device
②	M5 × 12 pan head screw	2	
③	Hanger A	1	For hanger
④	Hanger B	1	
⑤	φ8 × 50 coach screw	4	Door retention
⑥	Door retention fitting Hanger A	1	
⑦	Door retention fitting Hanger B	1	For control rack set
⑧	Pan head screw M5 × 8	2	
⑨	Control rack set	1	For stop device
⑩	M4 × 8 truss screw	2	
⑪	Plate nut	2	For door stopper
⑫	Plate spring	1	
⑬	M4 × 8 truss screw	2	For rail
⑭	Plate nut	2	
⑮	Stop roller	1	For pull spring
⑯	M5 × 8 pan head screw	2	
⑰	Door stopper fitting	1	For guide rail
⑱	φ5×16 pan head tapping screw	2	
⑲	Rail L = 2200 [L = 3100]	1	For guide roller
⑳	M5 × 16 truss screw	8[11]	
㉑	φ5 × 30 truss tapping screw	8[11]	For guide roller
㉒	Pull spring	1	
㉓	Pull spring fitting	1	For guide roller
㉔	M4 × 5 pan head screw	2	
㉕	M3 × 8 pan head screw	2	For guide roller
㉖	Guide rail L = 1300 [L = 1600] ※	1	
㉗	φ4 × 16 pan head tapping screw	5[6]	For guide roller
㉘	Height adjusting plate (t=1.0)	4	
㉙	Guide roller φ16	1	For guide roller
㉚	φ5 × 25 Hexagon tapping screw	2	
㉛	M5 × 12 Hexagon screw	2	For guide roller
㉜	Curl plug	2	

※ Guide rail : Rail 2.2m Guide rail 1.3m
Rail 3.1m Guide rail 1.6m

For wooden fittings, horizontal,
with door weights of 30-60kg and 60-80kg

NSC-CW36·48 series

**Reliable, Cost Effective, Sliding Doors
Closers – Simple to Use & Install**

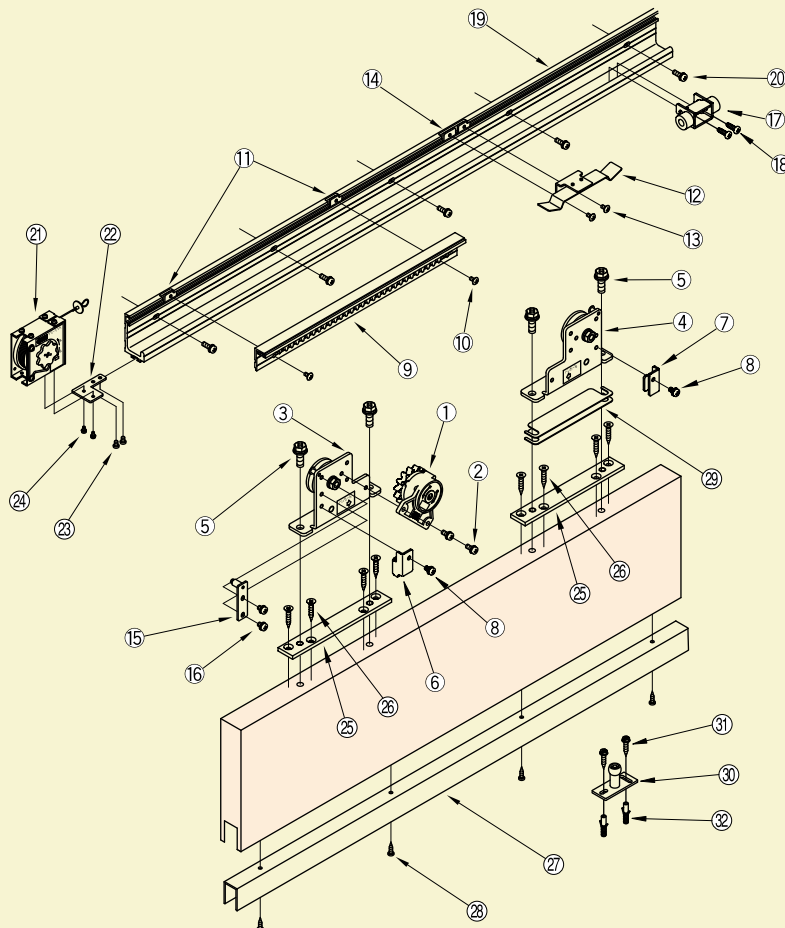
Features

- A standardized set of parts required for horizontal wooden fitting types.
(The product comes standard with a guide rail, guide roller, stop device, and other equipment.)
- An endless fluid friction resistance system ensures a long life.
- The product can be converted to the right- and left-handed opening types by simple operation.
- It is easy to install with a screwdriver.

Specifications

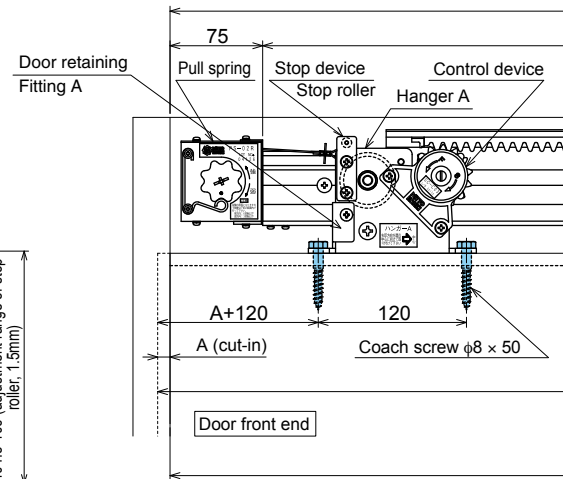
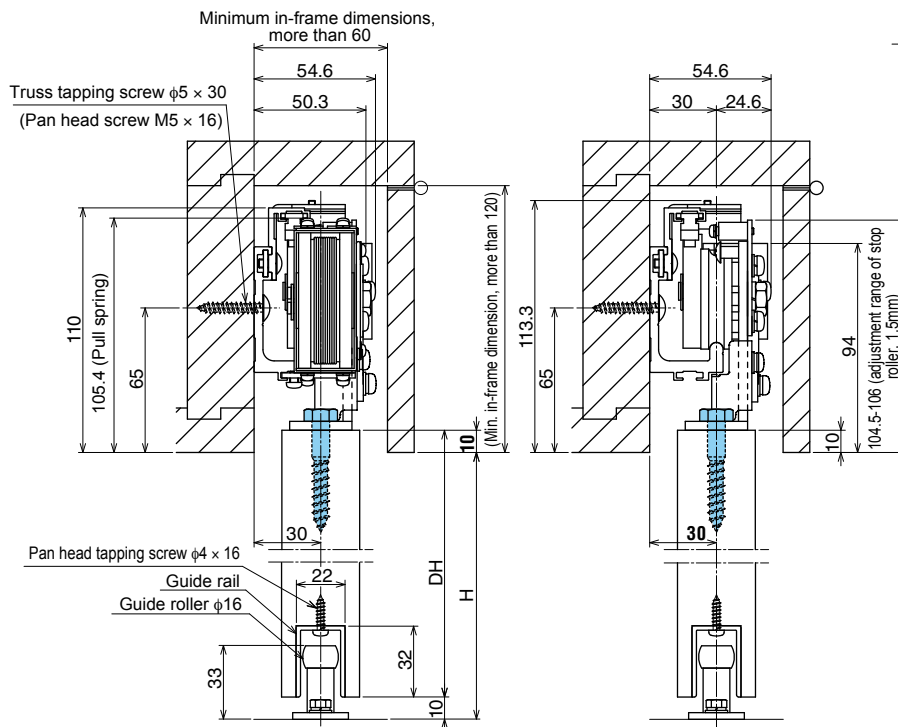
Model		NSC-CW36-22	NSC-CW36-31	NSC-CW48-22	NSC-CW48-31
Applicable doors	Weight [kg]	30-60		60-80	
	Width [mm]	700-1200	1200-1600	700-1200	1200-1600
Max. stroke [mm]		1500			
Closing drive system		Spiral spring type			
Controlling system		Fluid friction resistance type			
Controlling time		7-11 seconds (with a door-opening distance of 900mm)			
Initial opening force [N]		4.7-6.9		7.0-8.0	
Durability		more than 1 million open/close operations			
Pull spring		PS-03		PS-04	
Rail length [m]		2.2	3.1	2.2	3.1

Part details



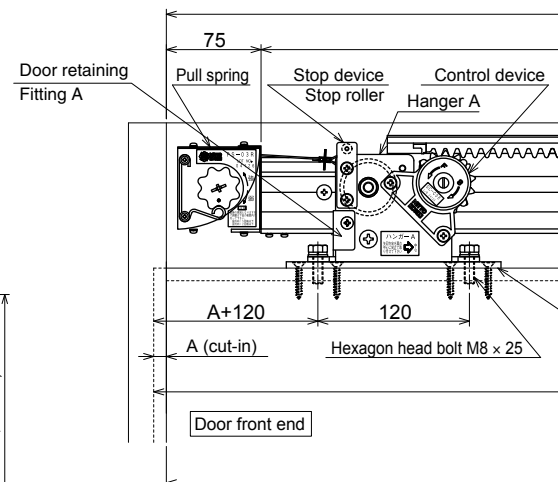
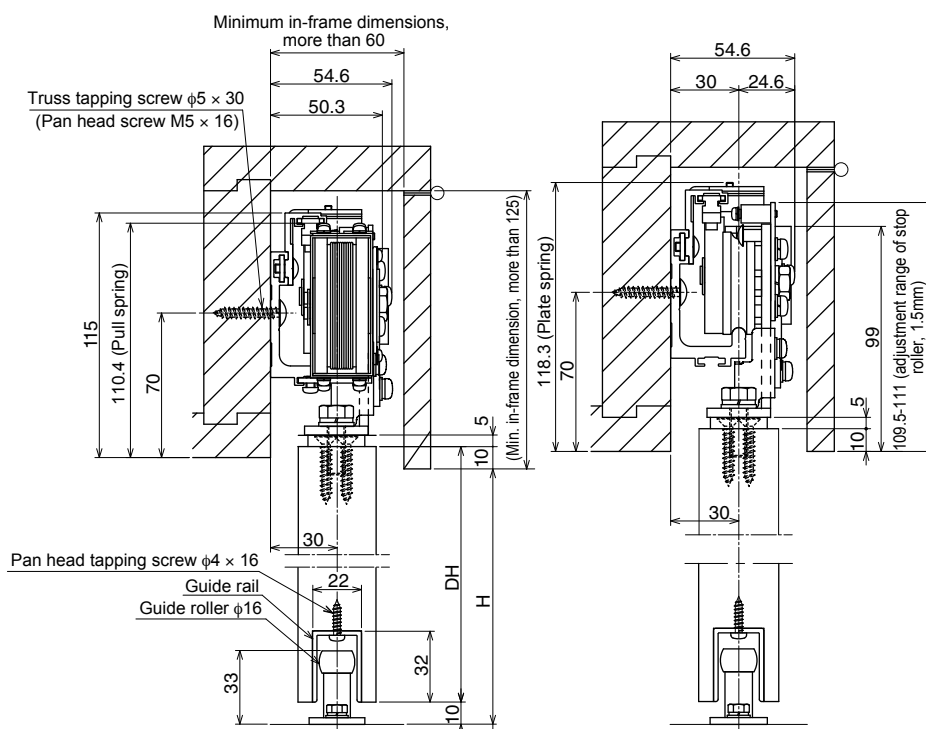
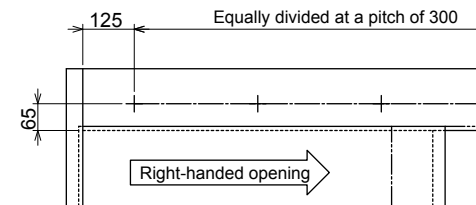
No.	Part	Q'ty	Remark
①	Control device	1	For control device
②	M5 × 12 pan head screw	2	
③	Hanger A	1	For hanger
④	Hanger B	1	
⑤	M8 × 25 hexagon head bolt	4	Door retention
⑥	Door retention fitting Hanger A	1	
⑦	Door retention fitting Hanger B	1	For control rack set
⑧	Pan head screw M5 × 8	2	
⑨	Control rack set	1	For stop device
⑩	M4 × 8 truss screw	2	
⑪	Plate nut	2	For door stopper
⑫	Plate spring	1	
⑬	M4 × 8 truss screw	2	For rail
⑭	Plate nut	2	
⑮	Stop roller	1	For pull spring
⑯	M5 × 8 pan head screw	2	
⑰	Door stopper fitting	1	For wooden door plate
⑱	φ5×16 pan head tapping screw	2	
⑲	Rail L = 2200 [L = 3100]	1	For guide rail
⑳	M5 × 16 truss screw	8[11]	
㉑	φ5 × 30 truss tapping screw	8[11]	For guide roller
㉒	Pull spring	1	
㉓	Pull spring fitting	1	
㉔	M4 × 5 pan head screw	2	
㉕	M3 × 8 pan head screw	2	
㉖	Wooden door plate	2	
㉗	φ5 × 30 flat head tapping screw	8	
㉘	Guide rail L = 1300 [L = 1600]※	1	
㉙	φ4 × 16 pan head tapping screw	5[6]	
㉚	Height adjusting plate (t=1.0)	4	
㉛	Guide roller φ16	1	
㉜	φ5 × 25 Hexagon tapping screw	2	
㉝	M5 × 12 Hexagon screw	2	
㉞	Curl plug	2	

※ Guide rail : Rail 2.2m Guide rail 1.3m, Rail 3.1m Guide rail 1.6m



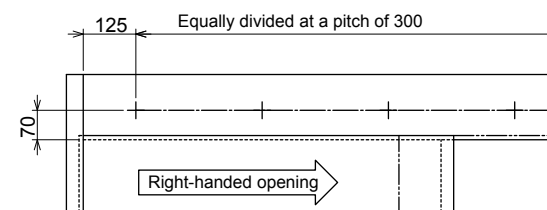
Position diagram for rail-mounting holes
(as viewed from inspection panel)

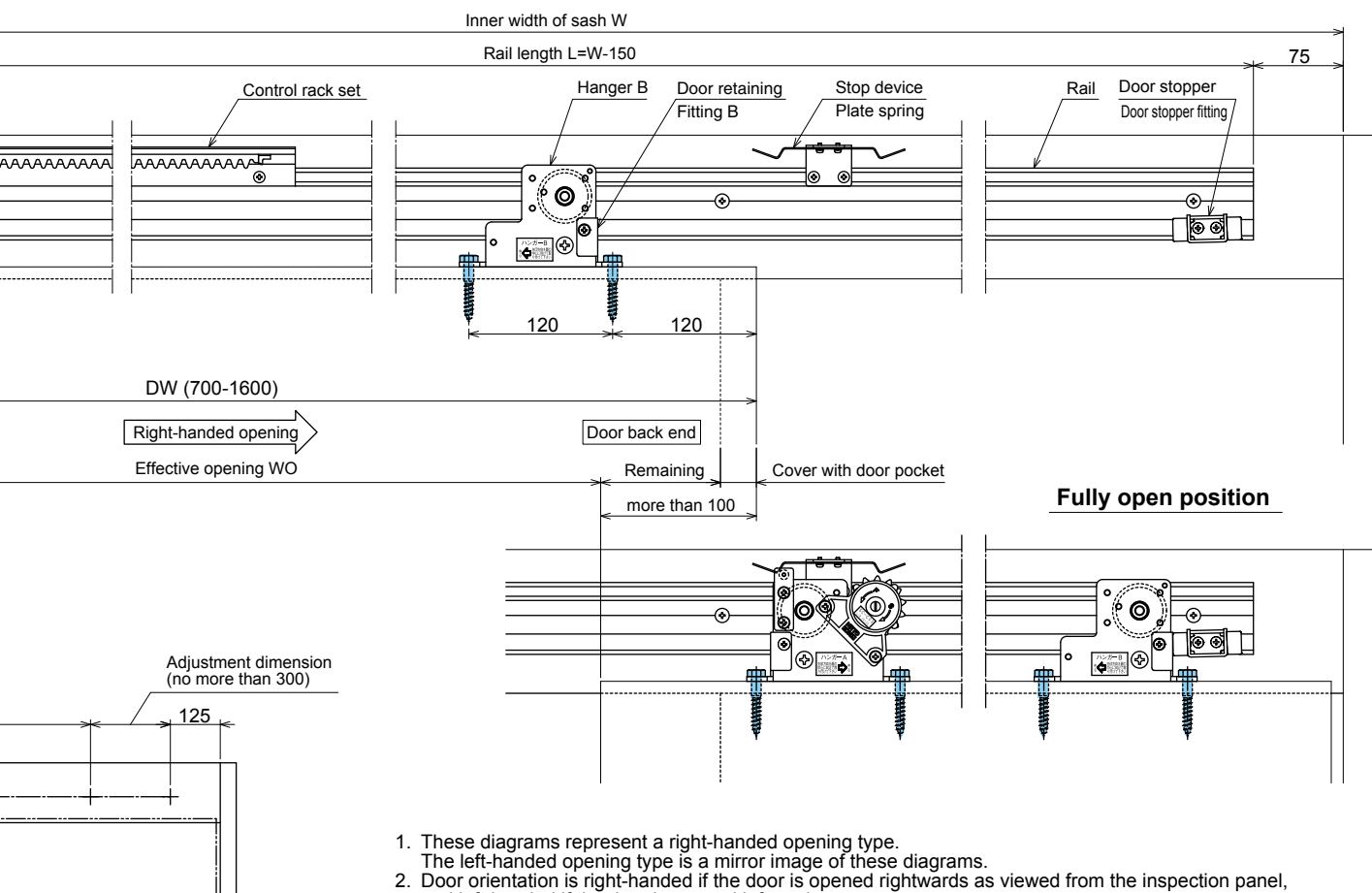
*When handling a steel frame,
tap M5 holes ($P = 0.8$).



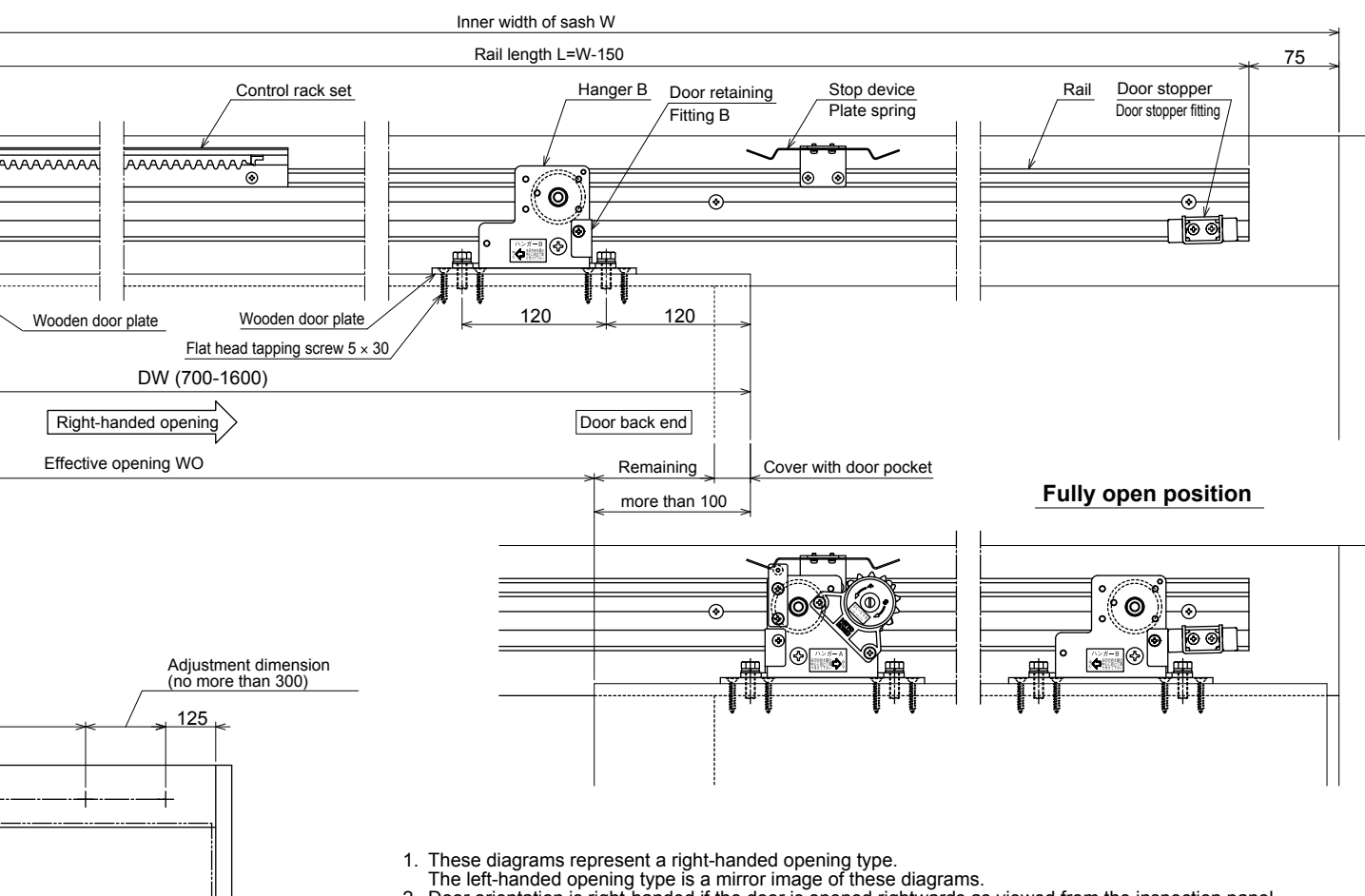
Position diagram for rail-mounting holes
(as viewed from inspection panel)

*When handling a steel frame,
tap M5 holes ($P = 0.8$).





1. These diagrams represent a right-handed opening type.
The left-handed opening type is a mirror image of these diagrams.
2. Door orientation is right-handed if the door is opened rightwards as viewed from the inspection panel, and left-handed if the door is opened leftwards.
3. The hanger is installed directly with coach screws.



1. These diagrams represent a right-handed opening type.
The left-handed opening type is a mirror image of these diagrams.
2. Door orientation is right-handed if the door is opened rightwards as viewed from the inspection panel, and left-handed if the door is opened leftwards.

For steel lightweight fittings, horizontal,
with door weights of 10-30kg, 30-60kg and 60-80kg

NSC-C23·36·48 series

Reliable, Cost Effective, Sliding Doors Closers – Simple to Use & Install

Features

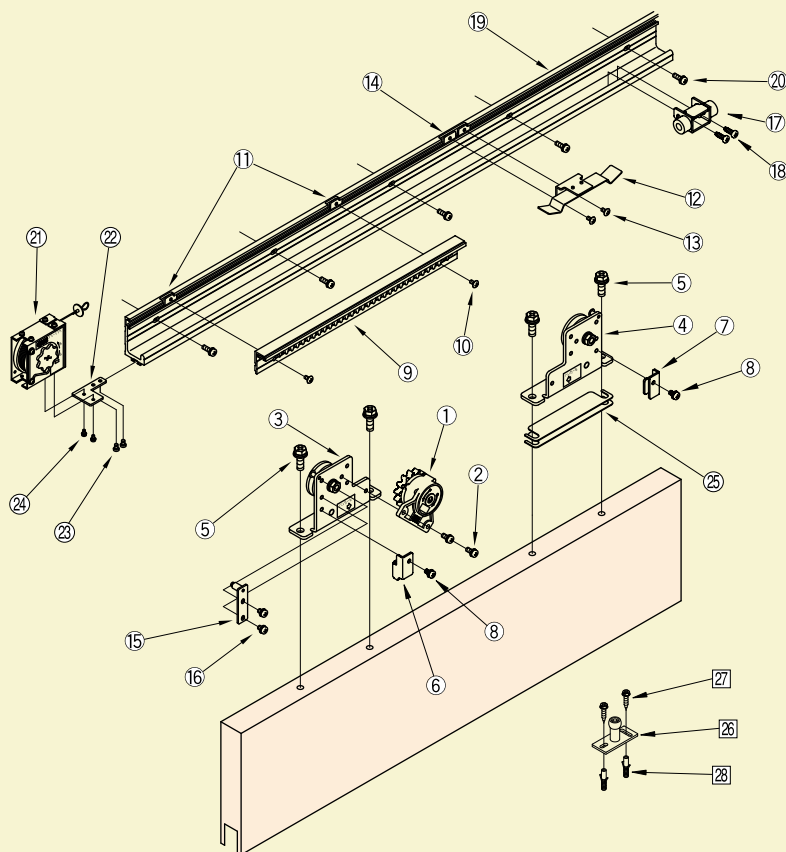
- A standardized set of parts required for horizontal steel lightweight fitting types. (The product comes standard with a stop device, and other equipment.)
- An endless fluid friction resistance system ensures a long life.
- The product can be converted to the right- and left-handed opening types by simple operation.
- It is easy to install with a screwdriver.

Specifications

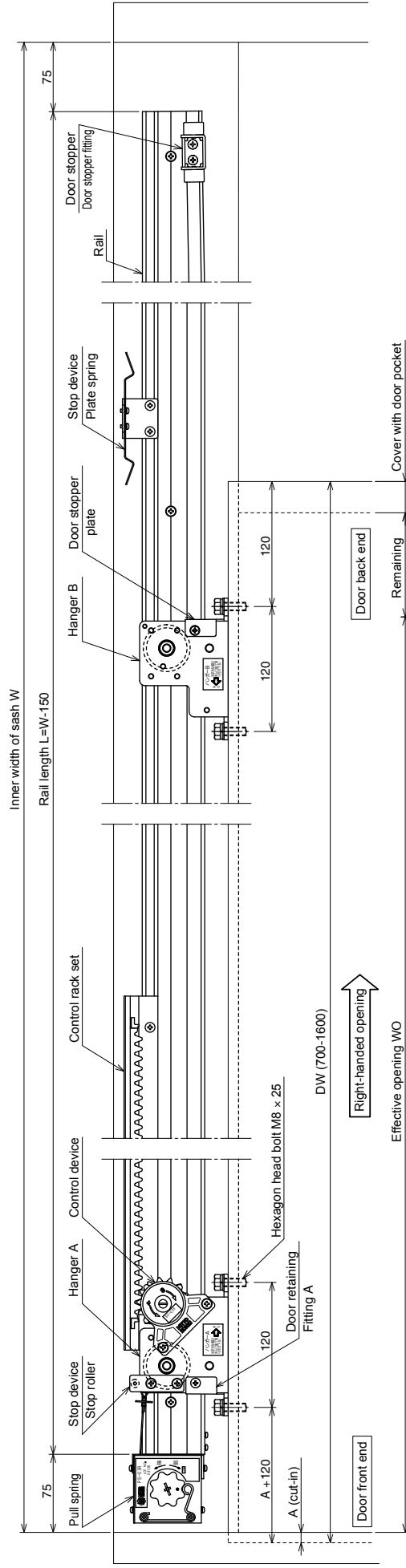
Model		NSC-C23-22	NSC-C23-31	NSC-C36-22	NSC-C36-31	NSC-C48-22	NSC-C48-31
Applicable doors	Weight [kg]	10-30		30-60		60-80	
	Width [mm]	700-1200	1200-1600	700-1200	1200-1600	700-1200	1200-1600
Max. stroke [mm]		1500					
Closing drive system		Spiral spring type					
Controlling system		Fluid friction resistance type					
Controlling time		7-11 seconds (with a door-opening distance of 900mm)					
Initial opening force [N]		3.5-4.6		4.7-6.9		7.0-8.0	
Durability		More than 1 million open/close operations					
Pull spring		PS-02		PS-03		PS-04	
Rail length [m]		2.2	3.1	2.2	3.1	2.2	3.1



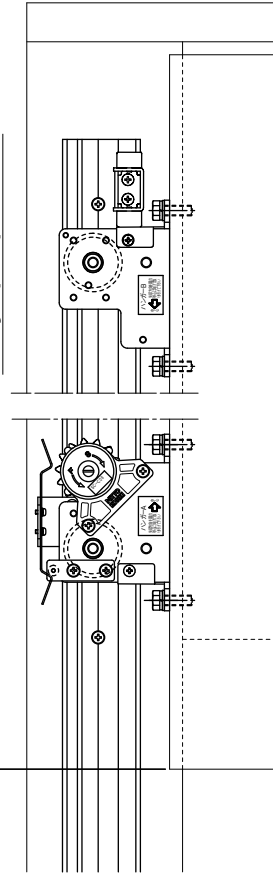
Part details



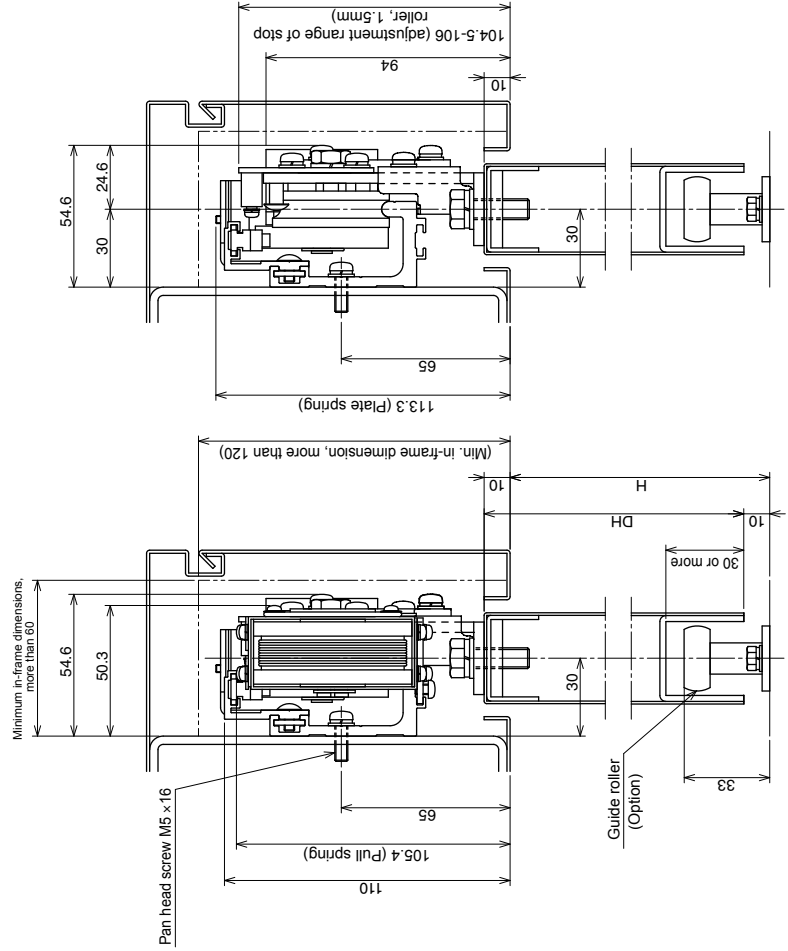
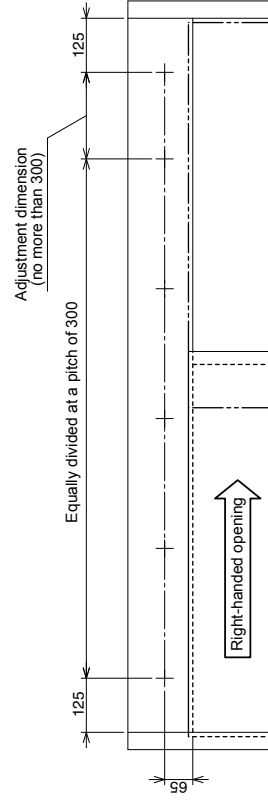
No.	Part	Q'ty	Remark
①	Control device	1	For control device
②	M5 × 12 pan head screw	2	
③	Hanger A	1	For hanger
④	Hanger B	1	
⑤	M8 × 25 hexagon head bolt	4	
⑥	Door retention fitting Hanger A	1	Door retention
⑦	Door retention fitting Hanger B	1	
⑧	Pan head screw M5 × 8	2	
⑨	Control rack set	1	For control rack set
⑩	M4 × 8 truss screw	2	
⑪	Plate nut	2	For stop device
⑫	Plate spring	1	
⑬	M4 × 8 truss screw	2	
⑭	Plate nut	2	
⑮	Stop roller	1	
⑯	M5 × 8 pan head screw	2	
⑰	Door stopper fitting	1	For door stopper
⑱	φ5×16 pan head tapping screw	2	
⑲	Rail L = 2200 [L = 3100]	1	For rail
⑳	M5 × 16 truss screw	8[11]	
	φ5 × 30 truss tapping screw	8[11]	
㉑	Pull spring	1	For pull spring
㉒	Pull spring fitting	1	
㉓	M4 × 5 truss screw	2	
㉔	M3 × 8 truss screw	2	
㉕	Height adjusting plate (t=1.0)	4	
㉖	Guide roller	1	For guide roller Option
㉗	φ5 × 25 Hexagon tapping screw	2	
	M5 × 12 Hexagon screw	2	
㉘	Curly plug	2	



Fully open position



Position diagram for rail-mounting holes (as viewed from inspection panel) M5 (P=0.8)



1. These diagrams represent a right-handed opening type. The left-handed opening type is a mirror image of these diagrams.
2. Door orientation is right-handed if the door is opened rightwards as viewed from the inspection panel, and left-handed if the door is opened leftwards.

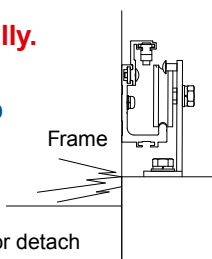
Sliding Closer

Q&A on Troubleshooting

Q: The door does not close fully.

A: The door, hanger, or other component contact the top cover or door pocket.

Action: Check the contact, then either reposition the hanger and/or guide roller in a different position or detach it and reinstall it in another position.



A: The guide roller contacts the top surface of the guide rail at the bottom of the door.

Action: Reinstall the door at the top. Slide the rail and/or other component.



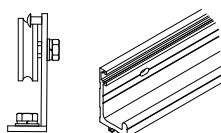
A: The door is not installed vertically.

Action: Reinstall the hanger or guide roller in another position.



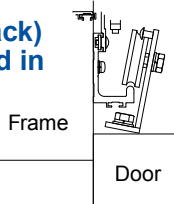
A: The door rollers of the hanger and the rail runway are scratched and dirty.

Action: Clean or replace the door rollers of the hanger and the rail.



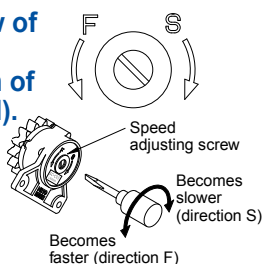
A: The door rollers (front and back) of the hanger are not installed in parallel with the rail.

Action: Reinstall them in different positions to make them parallel.

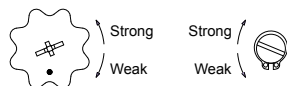


A: The speed adjusting screw of the control device is overturned in the direction of slow (direction S indicated). (An excessive controlling force is applied.)

Action: Turn the speed adjusting screw counterclockwise (direction F indicated) to adjust the speed.

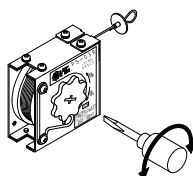


A: The pull spring is unadjusted (a horizontal type).



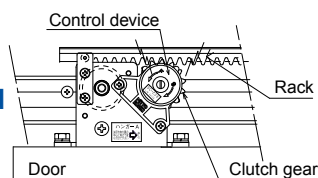
Right-handed opening type Left-handed opening type

Action: Adjust the spring force.



A: The clutch gear of the control device is too strongly engaged with the control rack of the rail.

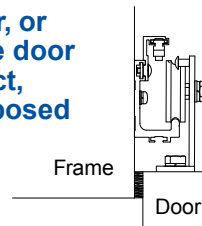
Action: Reinstall the hanger or guide roller at different positions.



Q: The door does not close fully or will not close stably.

A: The airtight rubber, mohair, or other material between the door and frame gets into contact, resulting in resistance imposed to the closing of the door.

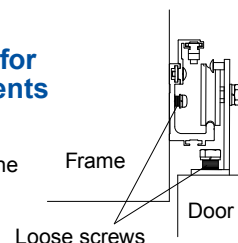
Action: Alleviate the contact.
Example: Cut the rubber or take another appropriate action.



Q: The door rattles.

A: Check that the screws for mounting the components remain tight enough.

Action: Further tighten or retighten the mounting screws.



Precautions for preventing accidents

1. Do not use the product for unspecified door dimensions or door weight.
2. If the control device of the product becomes ineffective, the door will close vigorously, possibly catching one of your fingers or getting into contact or turning over. Should an oil leak occur, component damage or incidents will result in ineffective control, despite speed adjustment, replace the product promptly.
3. Do not disassemble or remodel the product. Should you do so, we will not guarantee the subsequent performance of the product.
4. Securely tighten the screws that mount the product. Failure to observe this precaution may cause product damage or accident.
5. Be sure to install the door-retaining screws. Failure to observe this instruction may derail or turn the door over.
6. Be sure to install the door stopper on the door back end.
7. Do not drop or strike any of the components. Failure to follow this precaution may cause a breakdown.
8. The closer incorporated in the product causes the door to close on its own. Therefore do not close the door fast with force. Any such practice may cause the door to close vigorously, resulting in an unexpected accident.
9. Take care not to let a child play by hanging on the door.
10. In case of rough operation, Be sure to install door stopper on the floor or door back end.

Precautions to be taken to ensure a long service life

1. Wipe off dust and dirt from the rail and door rollers.
2. Conduct periodic checks for loose screws and other anomalies.

OTHER RELATED PRODUCTS

FLAG TYPE



- Armless closer making a boast of Nitto Kohki, being easily installed on an arch door, etc.
- Various models according to types and sizes of doors (wooden, aluminum, lightweight steel, steel doors) are available from us.

PC series

- Dripproof design
- Adopts an actuator with unique temperature sensor, thus assuring constant closing speed all the year round.



700 series

- They come with special sealing and stainless steel.
- A much wider range of uses including bathrooms and seashores.



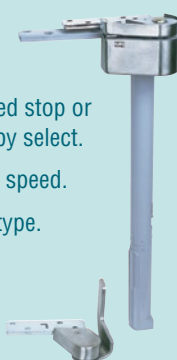
CENTER HANG TYPE

- Most suitable for fire protection, open smoke ventilation and normally-opened / closed doors and air supply doors.
- Concealed type (door built-in type.)



CONCEALED

- Can be selected stop or without stop by select.
- 2 way closing speed.
- Door built-in type.



CREATE

- Projecting type door closer
Automatically closes a door with quiet in combined use of a capsule with built-in spring and hydraulic device and a special pivot hinge.
- Simple design
Provided with arm-free construction, presenting simple design and beauty fit for any door.



⚠ Safety precautions

- To avoid personal injury and other accidents, thoroughly read the precautions set forth in the "Instruction Manual" or "Catalog" and properly complete the installation and adjustment procedures before use.

- Ensure that the door closing speed is properly adjusted at all times. If it is too high, personal injury may result.

Driving Inventive Technologies Too Open Up Tomorrows



Contact us

Kentokyo@nitto-kohki.co.jp

Product Info

www.nitto-kohki.co.jp/e/

Head Office and Research Center

Nakaikagami 2-9-4, Ohta-ku, Tokyo
 146-8555 Japan
 Phone : +81-3-3755-1111 Fax : +81-3-3753-8791

Overseas Auto Hinge Sales Division

Yokoyama Bldg. 7F, Nishi-Nippori 2-40-3,
 Arakawa-ku, Tokyo 116-0013 Japan
 146-8555 Japan
 Phone : +81-3-5850-5781 Fax : +81-3-3801-6001

DISTRIBUTED BY