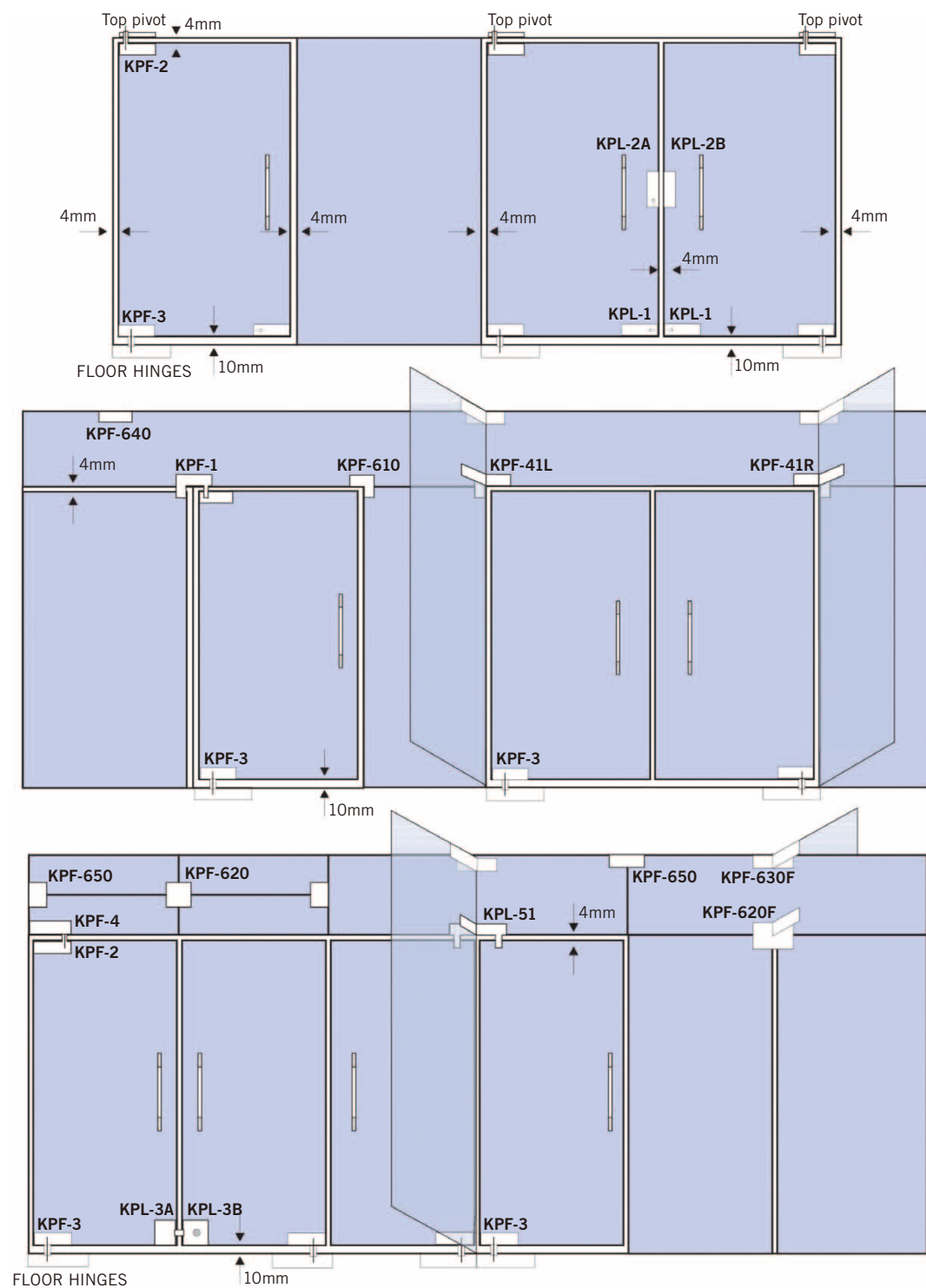
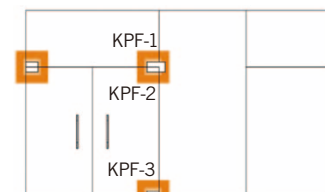


PATCH FITTING APPLICATIONS FOR FRAMELESS GLASS DOORS & TEMPERED GLASS ASSEMBLIES

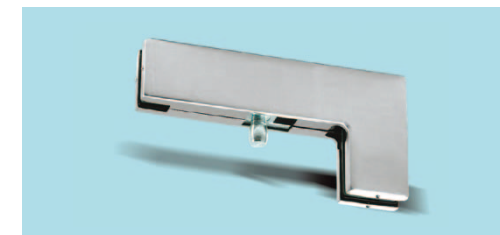
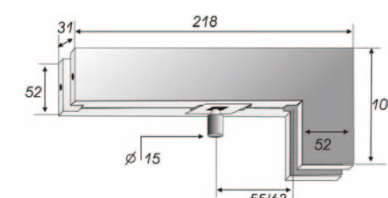


# **NN** PATCH FITTING / PATCH LOCK

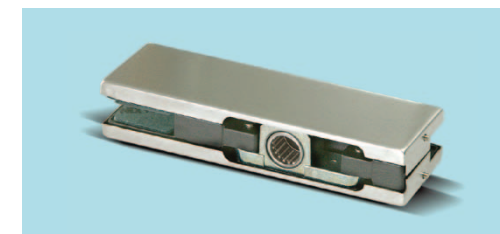
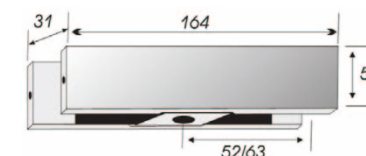
PATCH FITTING



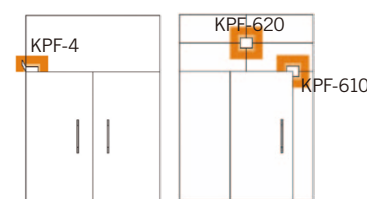
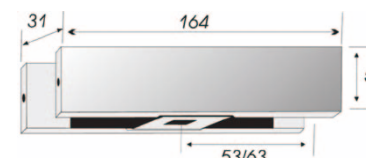
**KPF-1** CORNER PATCH



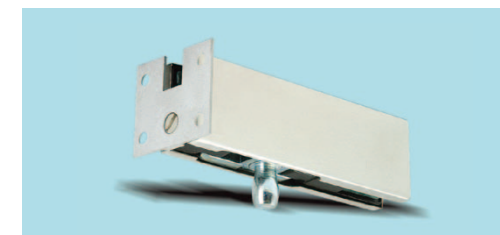
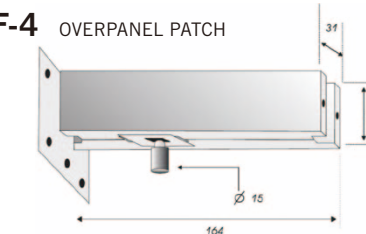
**KPF-2** TOP PATCH



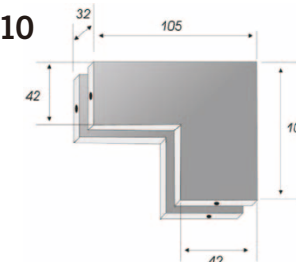
**KPF-3** BOTTOM PATCH



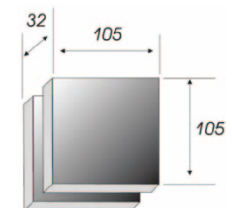
**KPF-4** OVERPANEL PATCH



**KPF-610**



**KPF-620**



**KENWA CO., LTD.**

TOWER WEST 12FL, UMEDA SKY BUILDING, 1-1-30, OYODO-NAKA, KITA-KU, OSAKA 531-0076 JAPAN

Phone: 81-(0)6-6454-9721

Facsimile: 81-(0)6-6454-9726

E-Mail: info@kenwa.co.jp http://www.kenwa.co.jp

http://www.micomautodoor.com

E.&O.E.

All sizes, photo's and drawings are subject to change without prior notice.  
Copyright © 2010 KENWA CO.,LTD. OSAKA JAPAN All Rights Reserved.

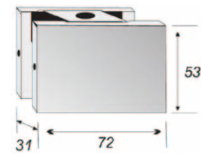
DISTRIBUTED BY



**PATCH FITTING**



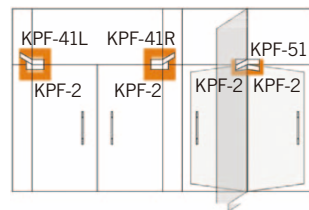
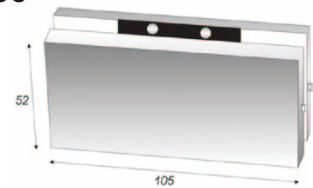
**KPF-640**  
CONNECTOR PATCH



**KPF-650**  
CONNECTOR PATCH - TWO GLASSES

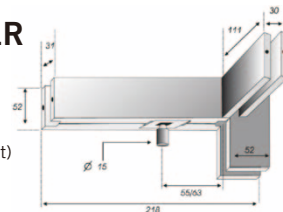


**KPF-660**



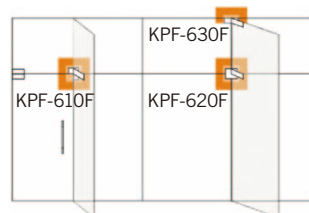
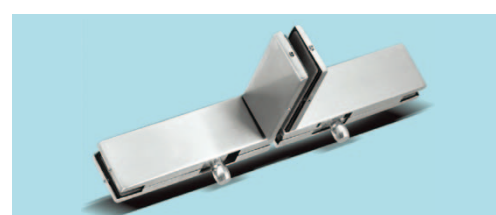
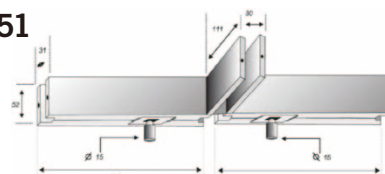
**KPF-41L/41R**  
CORNER PATCH

Transom side & interior fin link patch with pivot (Left / Right)

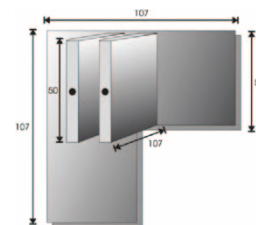


**KPF-51**

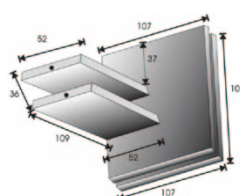
Double pivot Transom panel patch with fin holder for centre hung doors.



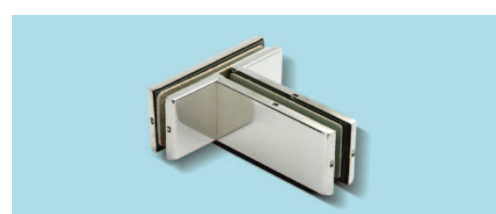
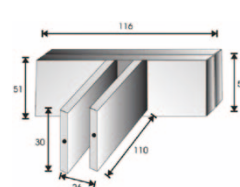
**KPF-610F**



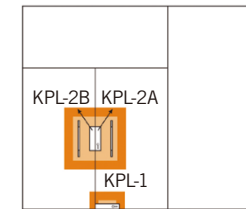
**KPF-620F**



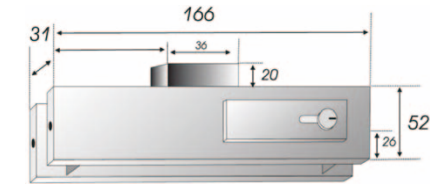
**KPF-630F**



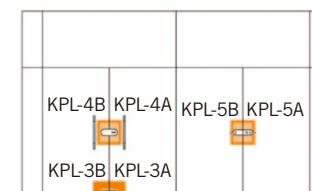
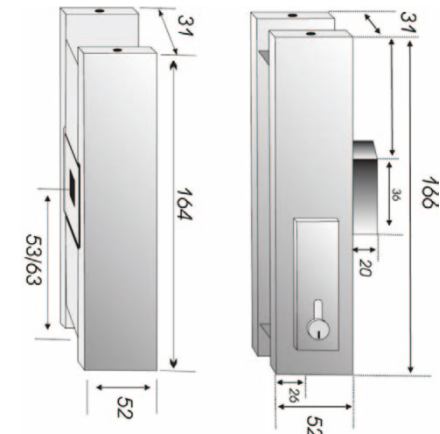
**PATCH LOCK**



**KPL-1** PATCH LOCK

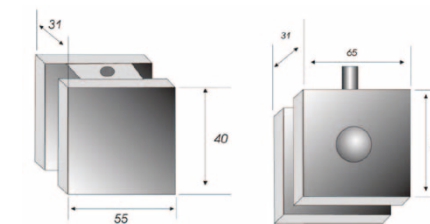


**KPL-2A, 2B** CENTER LOCK

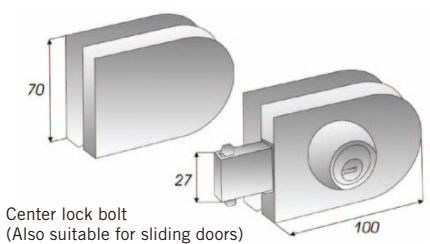


**KPL-3A, 3B**

TURN KNOB LOCK & STRIKE BOX



**KPL-4A, 4B** CENTER LOCK



Center lock bolt (Also suitable for sliding doors)



**KPL-5A, 5B** CENTER LOCK WITH HANDLE

