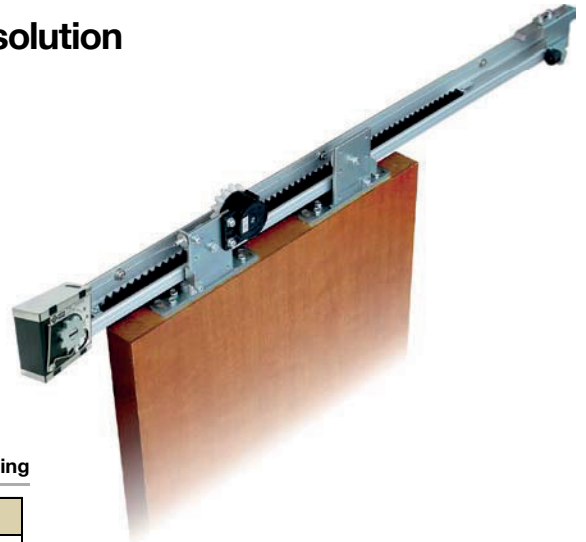


Highly reliable and cost effective self-closing solution for wooden sliding doors.
Safe & long term operation guaranteed.
Simple to install, set up and use.

Features

- All parts required for horizontal installation on light wooden door (e.g. guide rail, guide roller, stop device, etc.) are included in standard component.
- The product can be used for both left and right hand sliding doors and can be easily converted between left and right by simple adjustment.

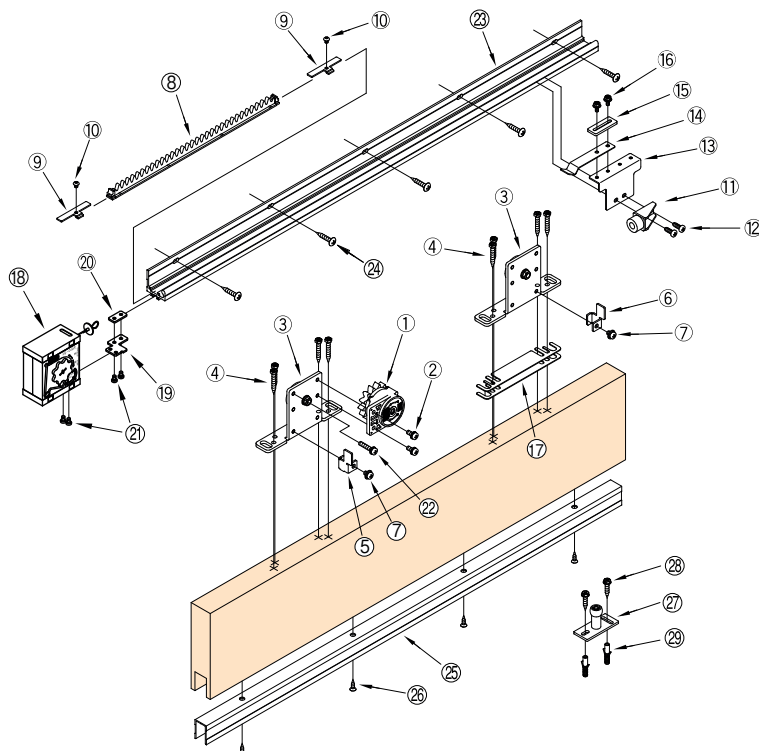


Specifications

right and left handed opening

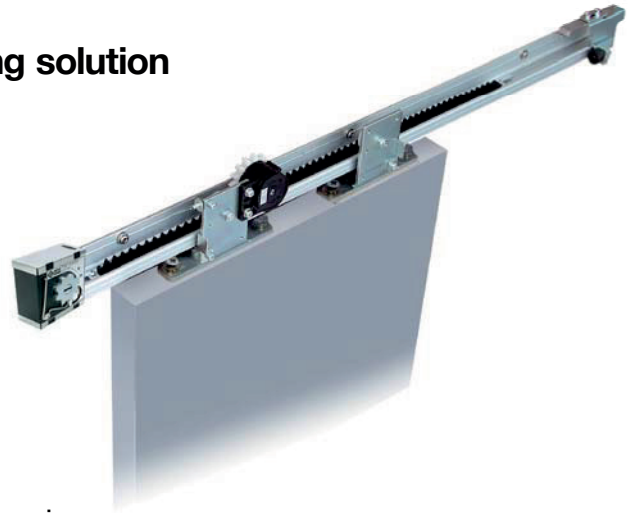
Model		NSC-CW60V-22	NSC-CW60V-31
Applicable doors	Weight [kg]	10-60	
	Width [mm]	600-1,200	1,200-1,600
Max. stroke [mm]		1,500	
Closing drive system		Spiral spring type	
Controlling system		Fluid friction resistance type	
Controlling time		7-11 seconds (with a door-opening distance of 900 mm)	
Initial opening force [N]		6.5 (Door weight 10 kg), 8.9 (Door weight 60 kg)	
Durability		More than half million open/close operations	
Control device		SC-C06V	
Pull spring		PS-04A	
Rail length [m]		2.2	3.1
Guide rail [m]		1.3	1.6

Part details



No.	Part	Q'ty	Remark
①	Control device	1	
②	M5×12 pan head screw	2	For control device
③	Hanger	2	
④	φ5X35 cross recessed hexagon head tapping screw	8	For hanger
⑤	Door retaining fitting Hanger L	1	
⑥	Door retaining fitting Hanger R	1	Door retention
⑦	M5×8 pan head screw	2	
⑧	Control rack	1	
⑨	Control rack fitting	2	For control rack
⑩	M4x5 hexagon socket button head screw	2	
⑪	Door stopper	1	
⑫	5x16 pan head drilling screw	2	For stop device
⑬	Plate spring bracket	1	
⑭	Plate spring	1	For door stopper
⑮	Stop force adjusting plate	1	
⑯	M4X10 cross recessed hexagon head screw	2	
⑰	Height adjusting plate (t = 1.0)	4	
⑱	Pull spring	1	
⑲	Pull spring bracket	1	
⑳	Plate nut	1	For pull spring
㉑	M4×6 pan head screw	4	
㉒	M5×25 pan head screw	1	
㉓	Rail L = 2200 [L = 3100]	1	For rail
㉔	φ5×30 truss head tapping screw	8[11]	
㉕	Guide rail L = 1300 [L = 1600]	1	For guide rail
㉖	φ4x16 countersunk head tapping screw	4[5]	
㉗	φ16 Guide roller	1	
㉘	φ5×25 Hexagon head tapping screw	2	For guide roller
㉙	M5×12 Hexagon head screw	2	
㉚	Fischer plug 6x30	2	

Highly reliable and cost effective self-closing solution for steel sliding doors.
Safe & long term operation guaranteed.
Simple to install, set up and use.



Features

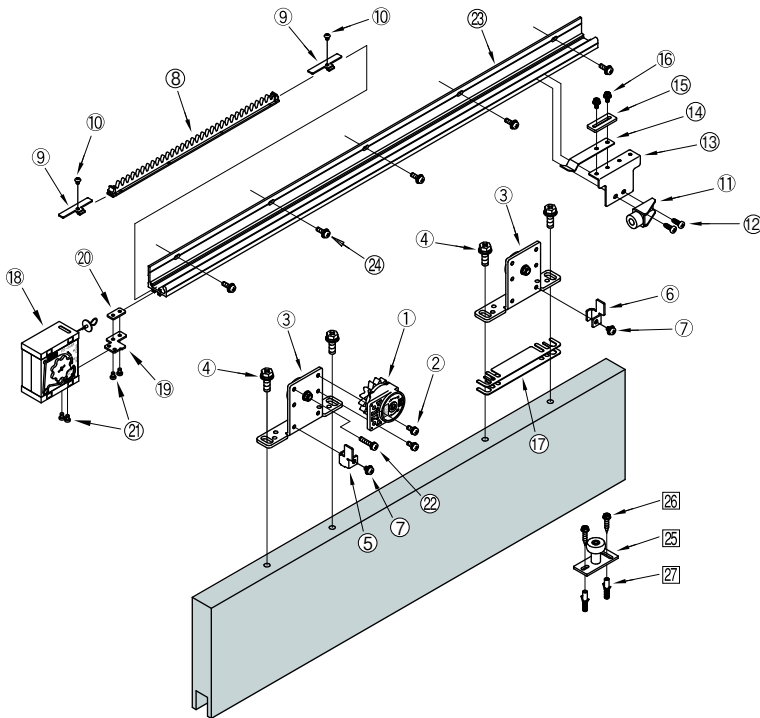
- All parts required for horizontal installation on light steel door (e.g. guide rail, guide roller, stop device, etc.) are included in standard component.
- The product can be used for both left and right hand sliding doors and can be easily converted between left and right by simple adjustment.

Specifications

right and left handed opening

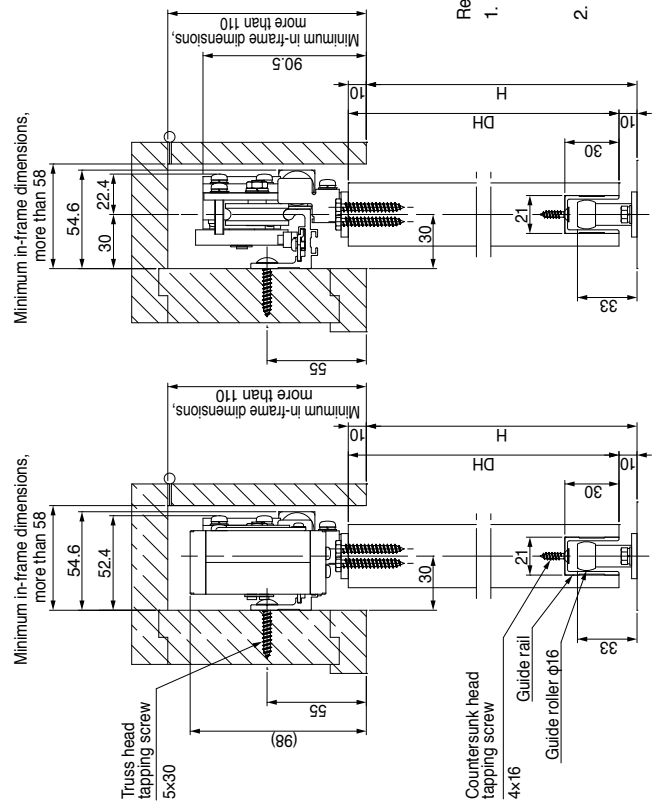
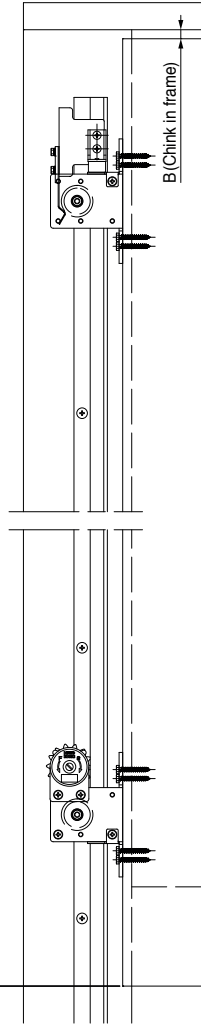
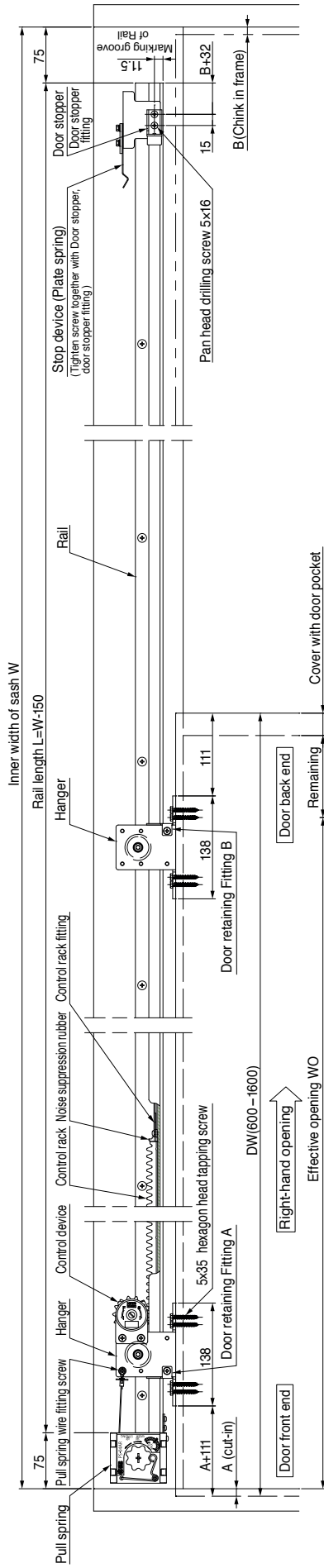
Model		NSC-C60V-22	NSC-C60V-31
Applicable doors	Weight [kg]	10-60	
	Width [mm]	600-1,200	1,200-1,600
Max. stroke [mm]		1,500	
Closing drive system		Spiral spring type	
Controlling system		Fluid friction resistance type	
Controlling time		7-11 seconds (with a door-opening distance of 900 mm)	
Initial opening force [N]		6.5 (Door weight 10 kg), 8.9 (Door weight 60 kg)	
Durability		More than half million open/close operations	
Control device		SC-C06V	
Pull spring		PS-04A	
Rail length [m]		2.2	3.1

Part details



No.	Part	Q'ty	Remark
①	Control device	1	For control device
②	M5x12 pan head screw	2	
③	Hanger	2	For hanger
④	M8x25 cross recessed hexagon head screw	4	
⑤	Door retaining fitting Hanger L	1	Door retention
⑥	Door retaining fitting Hanger R	1	
⑦	M5x8 pan head screw	2	For control rack
⑧	Control rack	1	
⑨	Control rack fitting	2	For stop device
⑩	M4X5 hexagon socket button head screw	2	
⑪	Door stopper	1	For door stopper
⑫	5x16 pan head drilling screw	2	
⑬	Plate spring bracket	1	For pull spring
⑭	Plate spring	1	
⑮	Stop force adjusting plate	1	For rail
⑯	M4X10 cross recessed hexagon head screw	2	
⑰	Height adjusting plate (t = 1.0)	4	For guide roller
⑱	Pull spring	1	
⑲	Pull spring bracket	1	For guide roller (Option)
⑳	Plate nut	1	
㉑	M4x6 pan head screw	4	For Fischer plug
㉒	M5x25 pan head screw	1	
㉓	Rail L = 2200 [L = 3100]	1	For Fischer plug
㉔	M5x16 pan head screw	8[11]	
㉕	Guide roller *	1	For Fischer plug
㉖	φ5x25 Hexagon head tapping screw	2	
㉗	M5x12 Hexagon head screw	2	For Fischer plug
㉘	Fischer plug 6x30	2	

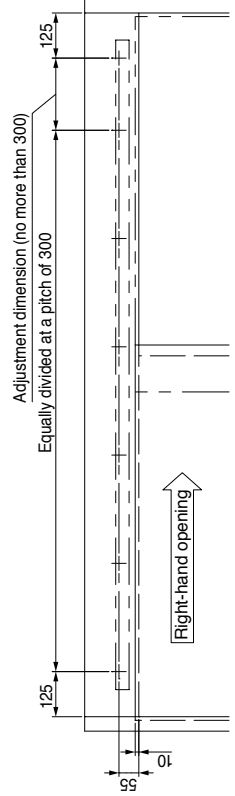
*4 types, φ5, φ25, φ30, φ35

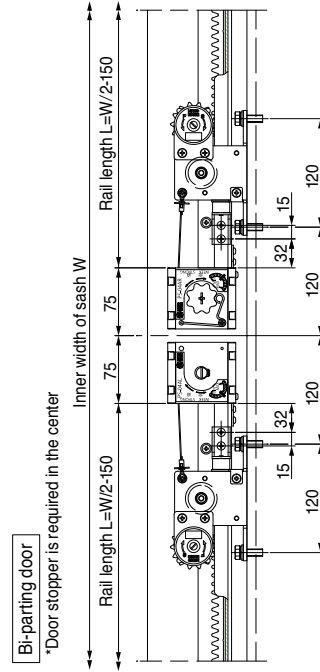
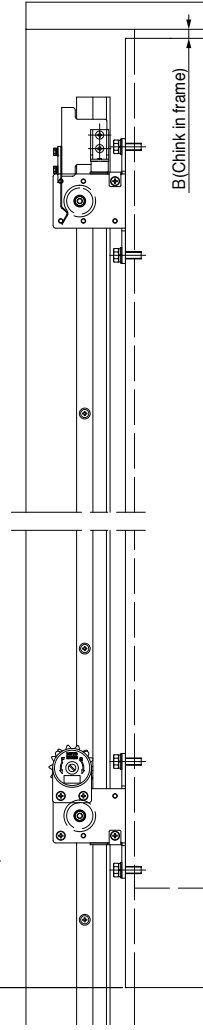
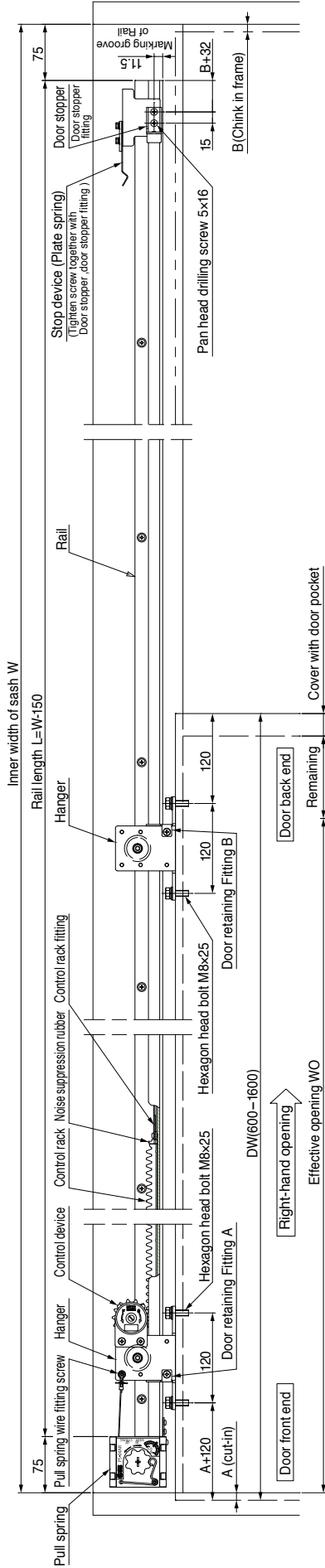


Remarks

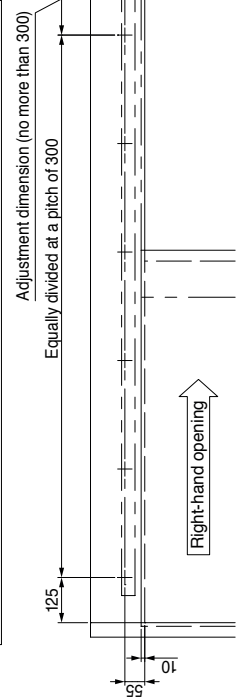
1. These diagrams represent a right-hand opening type. The left-hand opening type is a mirror image of these diagrams.
2. Door orientation is right-handed if the door is opened rightwards as viewed from the maintenance panel and left-handed if the door is opened leftwards.

Position diagram for rail-mounting holes (as viewed from inspection panel) M5 (P=0.8)





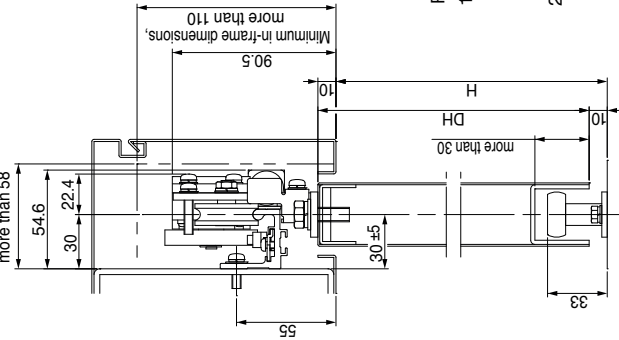
Position diagram for rail-mounting holes (as viewed from inspection panel) M5 (P=0.8)



Remarks

- These diagrams represent a right-hand opening type. The left-hand opening type is a mirror image of these diagrams.
- Door orientation is right-handed if the door is opened rightwards as viewed from the maintenance panel and left-handed if the door is opened leftwards.

Minimum in-frame dimensions, more than 58



Minimum in-frame dimensions, more than 58

