



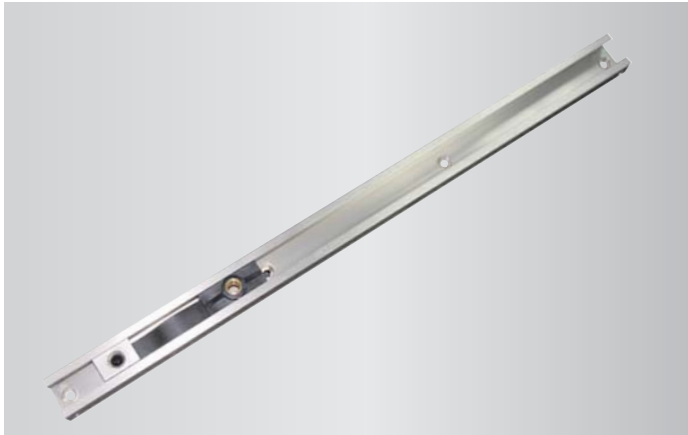
Concealed Door Closer

NHN® 490 SERIES

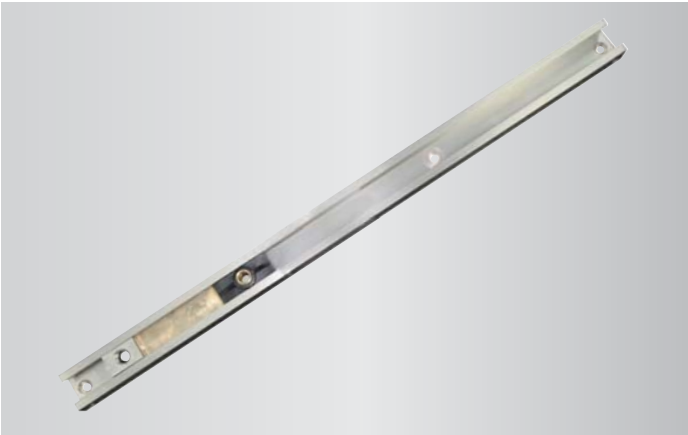
KENWA
<http://www.kenwa.co.jp>

ACCESSORIES

Hold open device in track



Back check cushion



Concealed Door Closer

KENWA
<http://www.kenwa.co.jp>

NHN® 490 SERIES



The NHN 490 Series overhead door closer is the 2nd in the Flagship range from NHN' s next generation of door closers.

Incorporating the latest cam type technology, the NHN 490 Series of door closers offers easy opening with increased efficiency on the closing torque.

The power is adjustable by allen key from EN2-4. The closing speed is easily adjusted via two independent adjustment valves. The slide arm can be fitted with a hold open device.

NHN 490 is CE / EN3 approved to EU directives (89/106/EEC) by the EN 1154:1996/A1:2002 and EN1634-1:2000. 10 year guarantee.

DATA & FEATURES

- NHN 490 Series offers sizes EN2-4, spring power adjustable by allen key.
- Back check function with cushion effect in track available.
- Easy installation.
- Easy speed and control adjustments by valve screws on the top of the closer body.
- Slimline body.
- Non-handed applications.
- DS slide arm available for double swing action.
- RAL9006 finish as standard with others available.

KENWA CO., LTD. **NHN**®
Closing Solutions
TOWER WEST 12FL, UMEDA SKY BUILDING, 1-1-30,
OYODO-NAKA, KITA-KU, OSAKA 531-0076 JAPAN
Phone: 81-(0)6-6454-9721
Facsimile: 81-(0)6-6454-9727
E-Mail: info@kenwa.co.jp <http://www.kenwa.co.jp>
<http://www.micomautodoor.com>

E.&O.E.
All sizes, photo's and drawings are subject to change without prior notice.
Copyright © 2013 KENWA CO.,LTD. OSAKA JAPAN All Rights Reserved.

DISTRIBUTED BY

SELECTION CHART

Power size (EN)	Door width (mm)	Door weight (kg)	490 SERIES			
			SLIDE ARM	HOLD OPEN	BACK CHECK	DOUBLE SWING ACTION
2	850	40	490	490S	490BCC	490DS
3	950	60				
4	1100	80				
CE EN3 approved			CE		CE	

NOTE 1: Where the actual size and mass of door to which the door closer is to be fitted relates to two sizes of door closers, the larger power size of door closer should be used.
NOTE 2: The door widths given are for standard installations, in the case of unusually high or heavy doors, windy or draughty conditions, a larger power size of door closer should be used.



Concealed Door Closer

NHN 490 SERIES

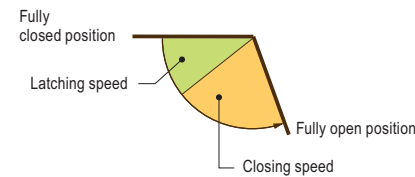
KENWA

<http://www.kenwa.co.jp>

FUNCTION

Closing & latching speed

The closing speed from maximum opening angle to 15° and the latching speed from 15° to 0° can easily be controlled by two independent valves on the top of the closer.

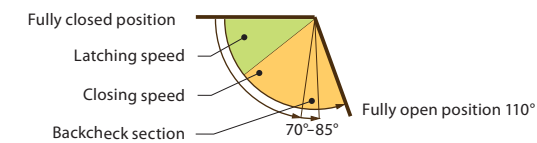


Back-check function (optional)

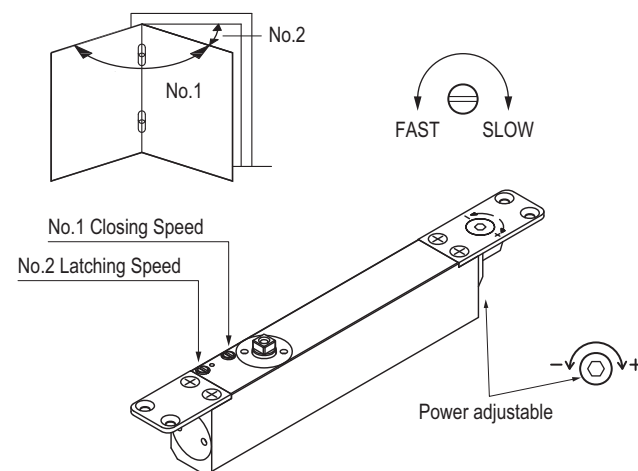
This function is built into the track of the slide arm and gives a cushion effect to the outward swing of the door. Most suited where the opening door might hit a wall i.e. in a corridor, or where it could injure someone if it opens too quickly. It is recommended for use on externally opening doors in windy environments.

The back check function is adjustable within the track. Recommended angle is between 70° and 85°.

IT SHOULD NOT BE REGARDED AS A DOOR STOP!



ADJUSTMENT



For easy adjustment the closing speed screw, the latching speed screw are located on the top of the closer body.

The power adjustment screw by no. 490 Series is also located on the top of the closer body. The manual shows the setting and the number of turns required to change the power force of the no. 490 closer body.

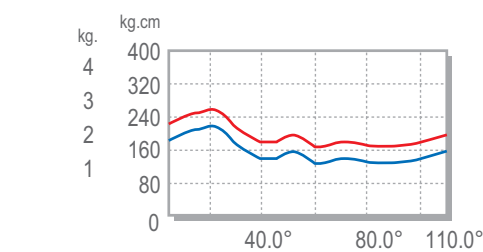
The no. 490 series door closers are designed to allow a door opening angle of 110° by using butt hinges with a maximum offset of 10mm. Using the door closers in top jamb application or using hinges with a different offset can limit the maximum opening angle of the door.

Using the optional DS slide arm and center pivot hinges the 490 door closer can be used on double swing action doors.

It is recommended to fit always a door stop.



2-4 MODEL			
NO. OF TURNS	DIRECTION	SIZE	
4	-	2	
0	*	3	
6	+	4	



New technology, creating more efficiency in closing torque, giving lower opening resistance.

Concealed Door Closer

NHN 490 SERIES

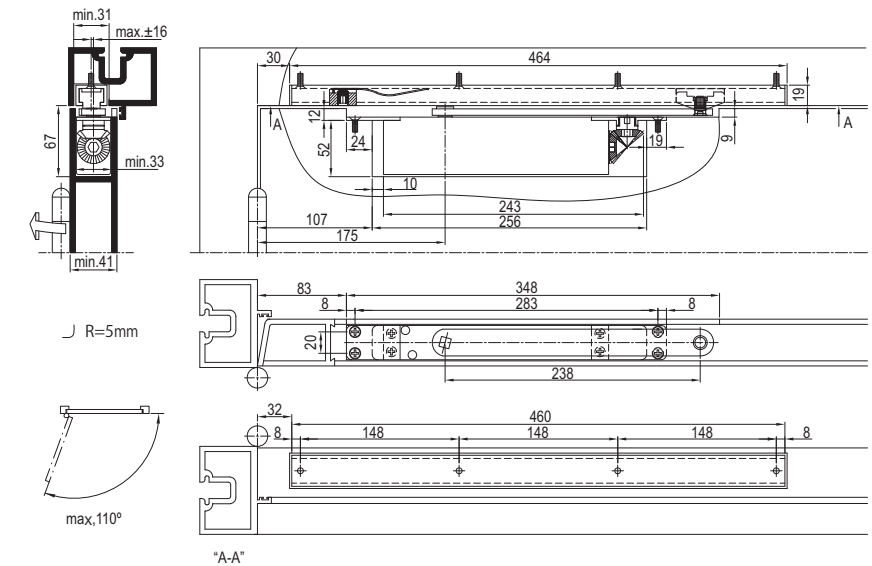
KENWA

<http://www.kenwa.co.jp>

INSTALLATION

Standard installation

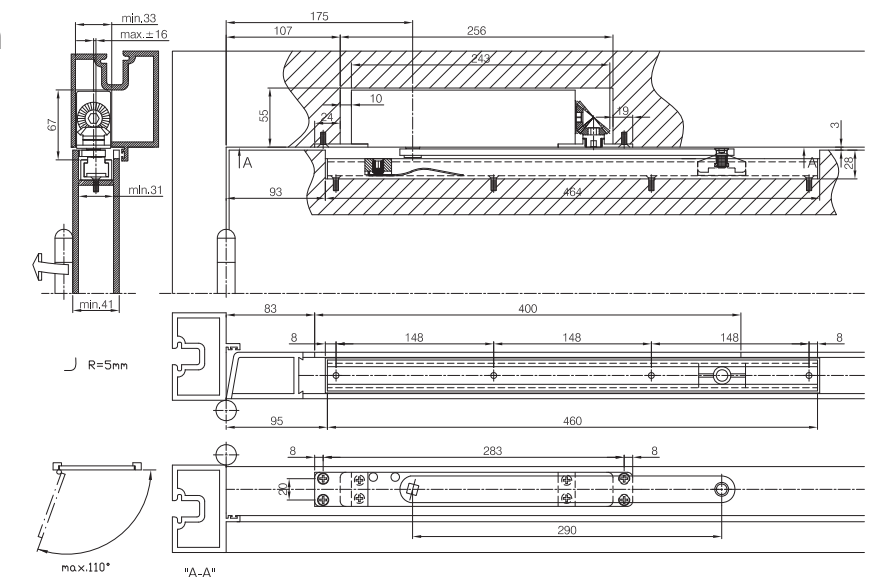
The closer body fitted into the door;
the slide arm into the top jamb.



This illustration shows the NHN 490 door closer with slide arm in a right handing configuration (DIN L).

Top jamb installation

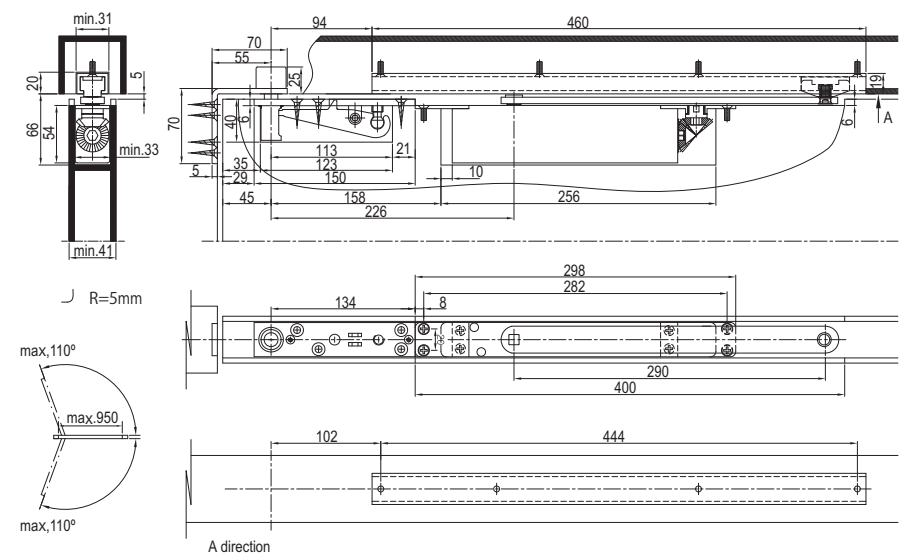
The closer body fitted into the top jamb;
the slide arm into the top of the door



This illustration shows the NHN 490 door closer with slide arm in right handing top jamb configuration (DIN L).

Double Swing action installation

With the optional DS slide arm and using center pivot hinges the door closer can be used on double swing action doors



This illustration shows the NHN 490DS door closer with slide arm DS in a double action configuration (DIN L+R).